

Environmental weed risk assessment

Indian bluegrass (*Bothriochloa pertusa*)

Indian bluegrass is a stoloniferous, mat-forming, tropical (C4) perennial grass.

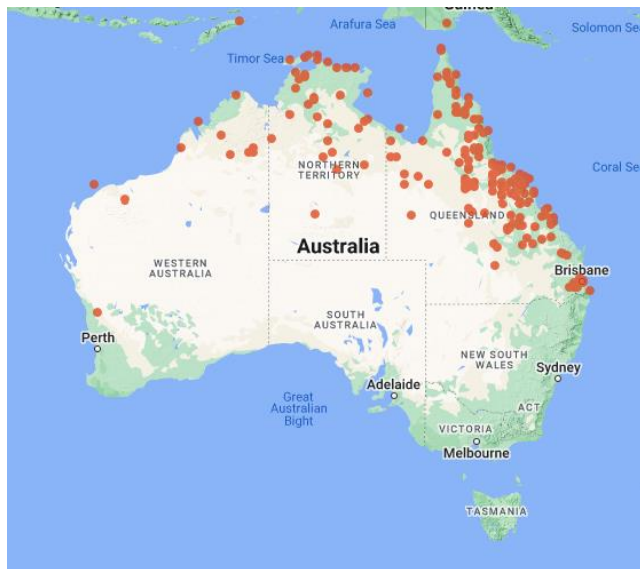
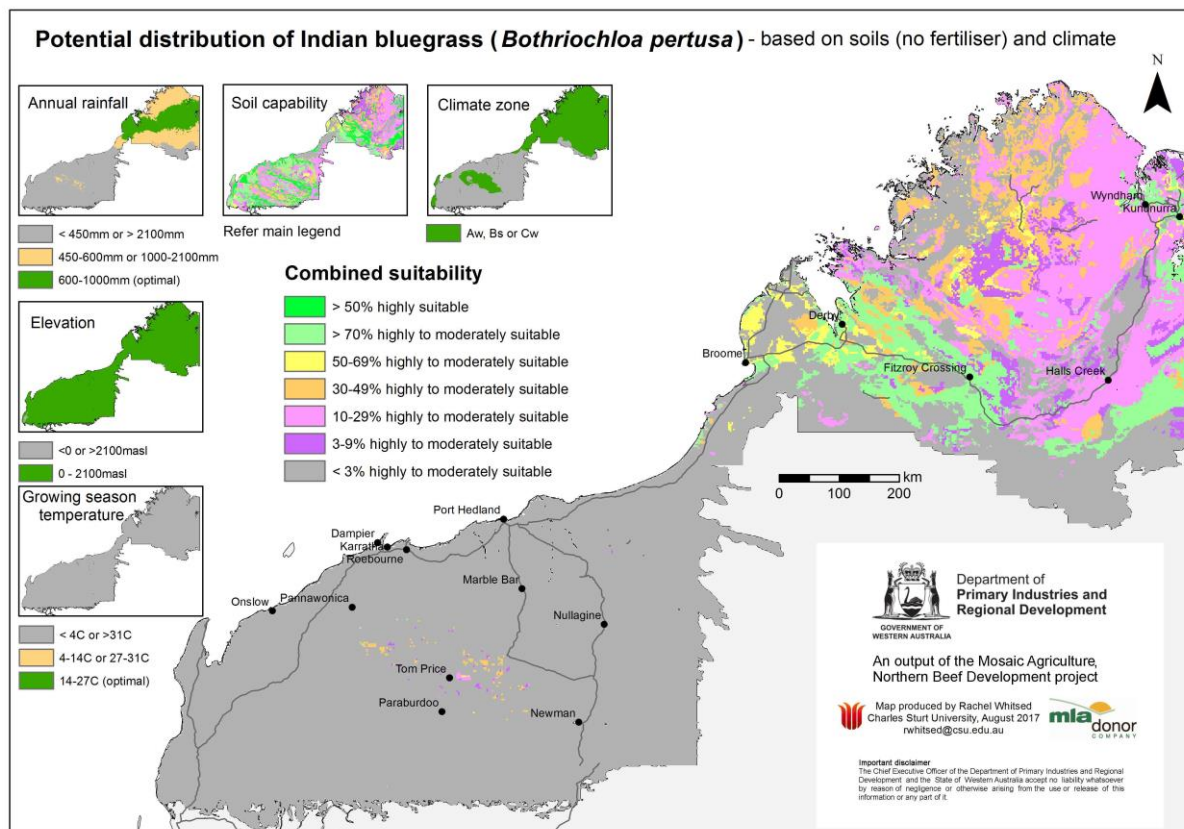


Figure 1 Distribution of Indian bluegrass (*Bothriochloa pertusa*) in Australia
(Source: 'The Australasian Virtual Herbarium')

Invasiveness and Impacts scores by Rod Randall

Invasiveness score	Impacts score
7.0	4.5

Potential distribution



Region	Area of suitable soils and climate (million ha)	Potential distribution score
Kimberley (>450mm AAR*)	8.1Mha	7.0
Kimberley (<450mm AAR)	0	0.5
Pilbara (>450mm AAR)	0.05Mha	1.0
Pilbara (<450mm AAR)	0	0.5
Gascoyne – Goldfields	0	0.5

*AAR – Average annual rainfall

Overall weed risk assessment

Region	WRA calculation*	Weed risk score	WRA rating
Kimberley (>450mm AAR)	7.0 x 4.5 x 7.0	220.5	High
Kimberley (<450mm AAR)	7.0 x 4.5 x 0.5	15.8	Negligible-low
Pilbara (>450mm AAR)	7.0 x 4.5 x 1.0	31.5	Negligible-low
Pilbara (<450mm AAR)	7.0 x 4.5 x 0.5	15.8	Negligible-low
Gascoyne – Goldfields	7.0 x 4.5 x 0.5	15.8	Negligible-low

* Invasiveness (0-10) x Impacts (0-10) x Potential Distribution (0-10) = Weed risk score (0-1000)

Updated May 2022

Important disclaimer

The Chief Executive Officer of the Department of Primary Industries and Regional Development and the State of Western Australia accept no liability whatsoever by reason of negligence or otherwise arising from the use or release of this information or any part of it.

Copyright © Department of Primary Industries and Regional Development, 2022