

Environmental weed risk assessment

Wynn cassia, roundleaf cassia (*Chamaecrista rotundifolia*)

Wynn cassia is an annual or short-lived, self-regenerating tropical legume.

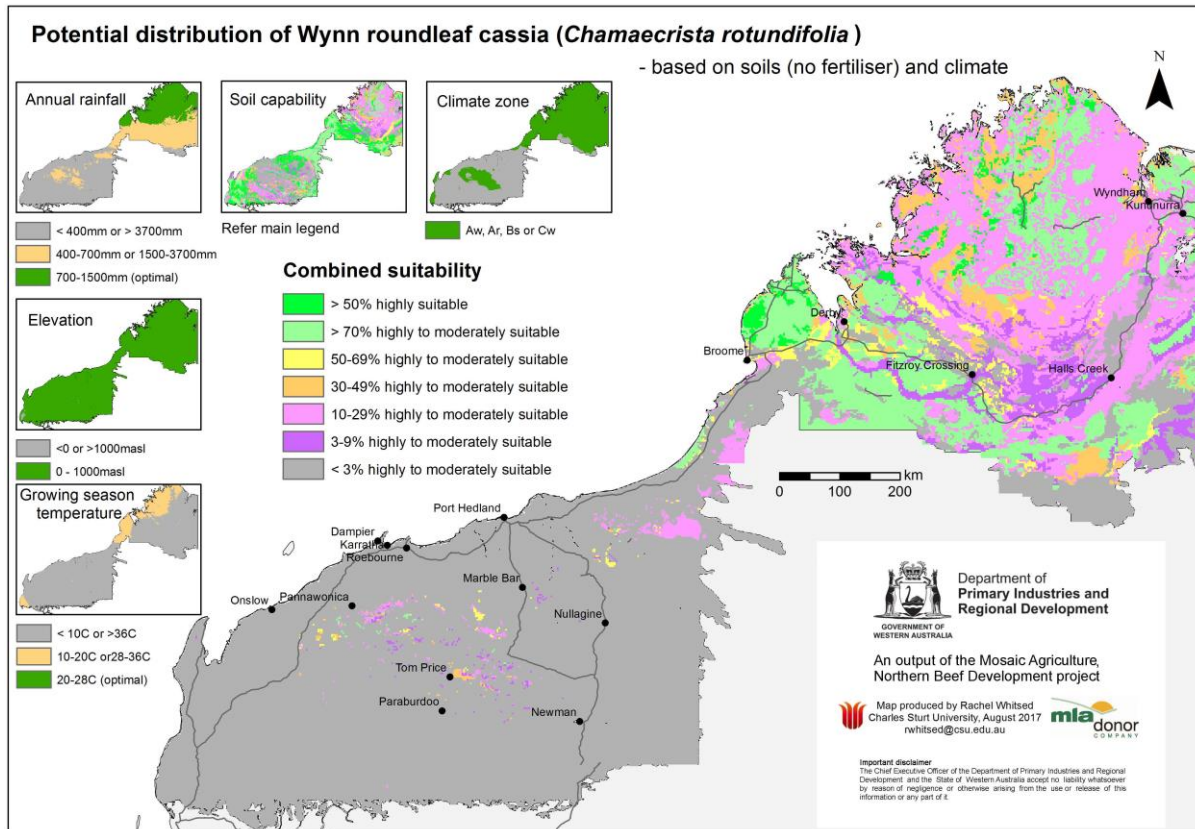


Figure 1. Distribution of Wynn roundleaf cassia (*Chamaecrista rotundifolia*) in Australia (Source: 'The Australasian Virtual Herbarium')

Invasiveness and Impacts scores by Rod Randall

Invasiveness score	Impacts score
5.2	1.0

Potential distribution



Region	Area of suitable soils and climate (million ha)	Potential distribution score
Kimberley (>400mm AAR)	11.7Mha	8.0
Kimberley (<400mm AAR)	0	0.5
Pilbara (>400mm AAR)	0.22Mha	1.0
Pilbara (<400mm AAR)	0	0.5
Gascoyne – Goldfields	0	0.5

Overall weed risk assessment

Region	WRA calculation*	Weed risk score	WRA rating
Kimberley (>400mm AAR)	5.2 x 1.0 x 8.0	41.6	Negligible-low
Kimberley (<400mm AAR)	5.2 x 1.0 x 0.5	2.6	Negligible-low
Pilbara (>400mm AAR)	5.2 x 1.0 x 1.0	5.2	Negligible-low
Pilbara (<400mm AAR)	5.2 x 1.0 x 0.5	2.6	Negligible-low
Gascoyne – Goldfields	5.2 x 1.0 x 0.5	2.6	Negligible-low

* Invasiveness (0-10) x Impacts (0-10) x Potential Distribution (0-10) = Weed risk score (0-1000)

Updated May 2022

Important disclaimer

The Chief Executive Officer of the Department of Primary Industries and Regional Development and the State of Western Australia accept no liability whatsoever by reason of negligence or otherwise arising from the use or release of this information or any part of it.

Copyright © Department of Primary Industries and Regional Development, 2022