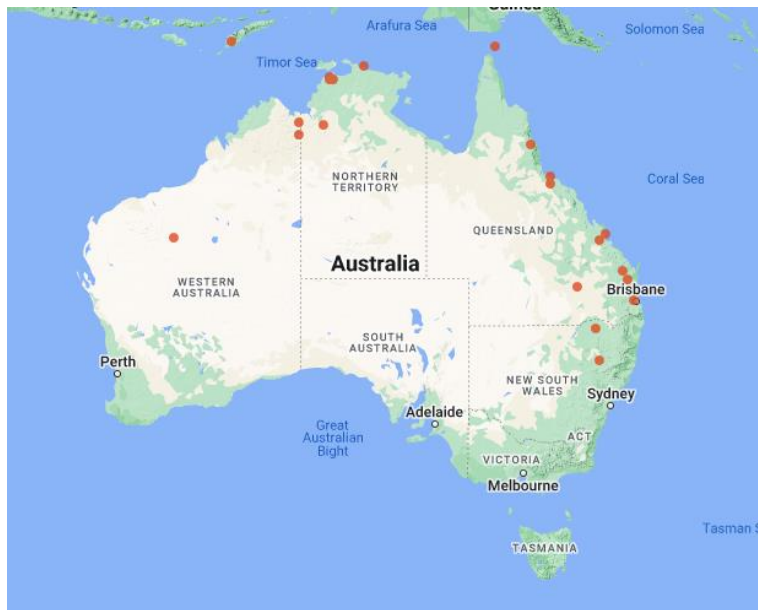


## Environmental weed risk assessment

### Desmanthus (*Desmanthus virgatus*)

Desmanthus is a summer-growing, perennial legume adapted to neutral to alkaline, clay soils.

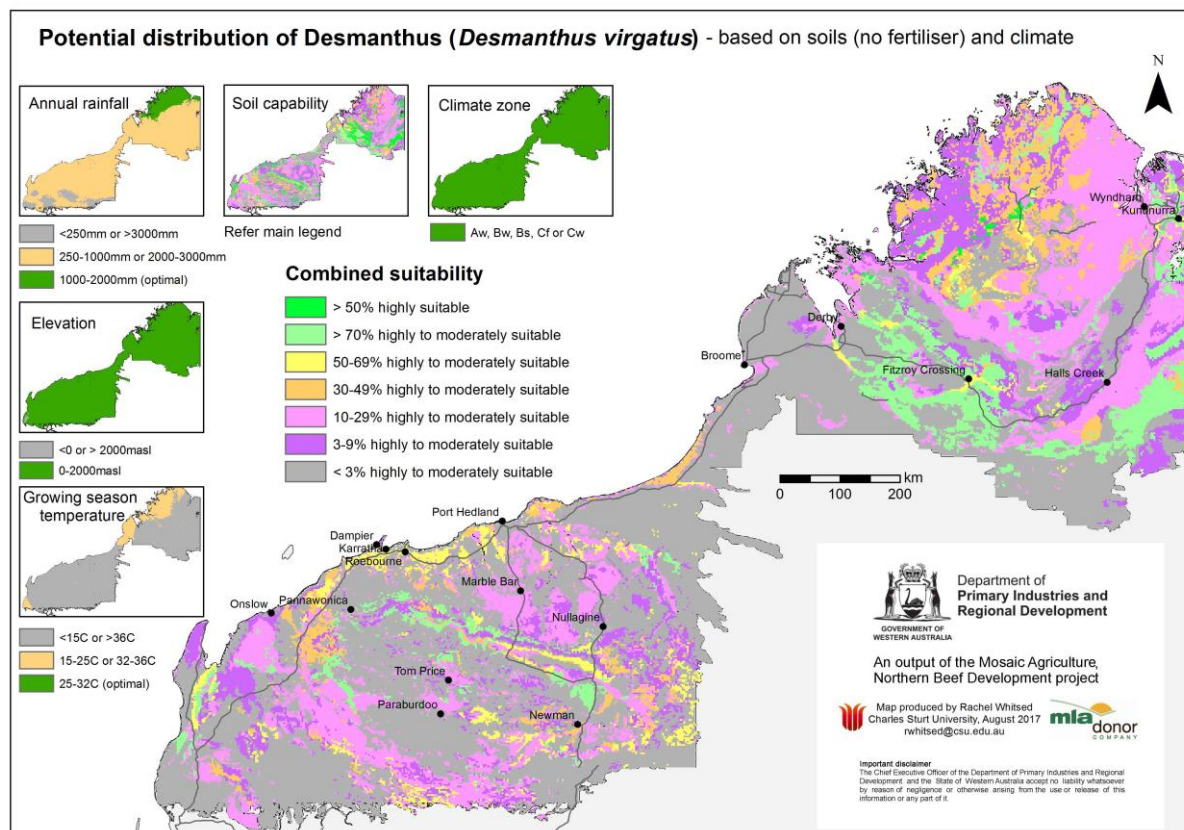


**Figure 1** Distribution of desmanthus (*Desmanthus virgatus*) in Australia  
(Source: 'The Australasian Virtual Herbarium')

Invasiveness and Impacts scores by Rod Randall

<b>Invasiveness score</b>	<b>Impacts score</b>
<b>7.0</b>	<b>3.0</b>

## Potential distribution



Region	Area of suitable soils and climate (million ha)	Potential distribution score
Kimberley	7.2Mha	7.0
Pilbara	3.0Mha	5.0
Gascoyne – Goldfields	0	0.5

## Overall weed risk assessment

Region	WRA calculation*	Weed risk score	WRA rating
Kimberley	7.0 x 3.0 x 7.0	147.0	<b>High</b>
Pilbara	7.0 x 3.0 x 5.0	105.0	<b>Medium</b>
Gascoyne – Goldfields	7.0 x 3.0 x 0.5	10.5	<b>Negligible-low</b>

\* Invasiveness (0-10) x Impacts (0-10) x Potential Distribution (0-10) = Weed risk score (0-1000)

Updated May 2022

### Important disclaimer

The Chief Executive Officer of the Department of Primary Industries and Regional Development and the State of Western Australia accept no liability whatsoever by reason of negligence or otherwise arising from the use or release of this information or any part of it.

Copyright © Department of Primary Industries and Regional Development, 2022