

## Environmental weed risk assessment

### Bambatsi panic (*Panicum coloratum*)

Bambatsi panic is a sub-tropical, tufted perennial grass adapted to fertile, clay soils. It will persist on sandy soils but with low productivity.

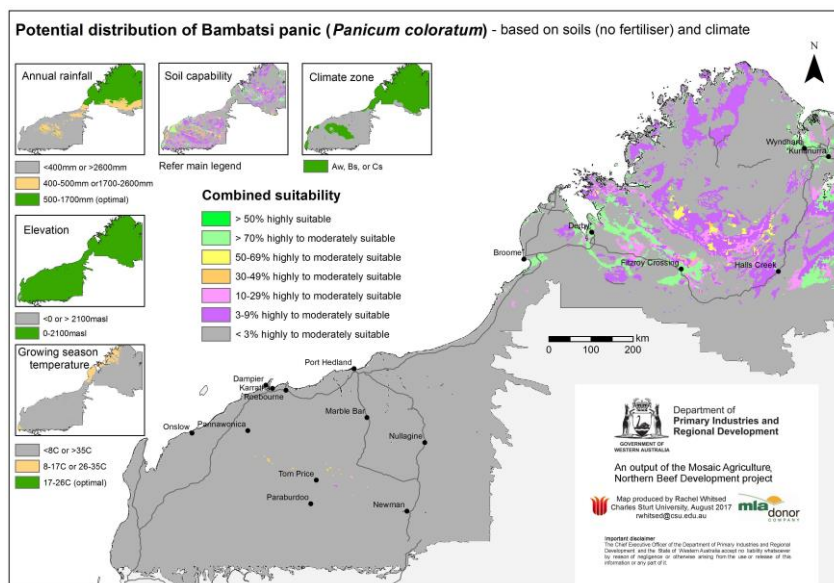


**Figure 1** Distribution of Bambatsi panic (*Panicum coloratum*) in Australia  
(Source: 'The Australasian Virtual Herbarium')

Invasiveness and Impacts scores by Rod Randall

Invasiveness score	Impacts score
6.7	4.0

## Potential distribution



Region	Area of suitable soils and climate (million ha)	Potential distribution score
Kimberley (>400mm AAR*)	2.2Mha	5.0
Kimberley (<400mm AAR)	0	0.5
Pilbara (>400mm AAR)	0.01Mha	1.0
Pilbara (<400mm AAR)	0	0.5
Gascoyne – Goldfields	0	0.5

\*AAR – Average annual rainfall

## Overall weed risk assessment

Region	WRA calculation*	Weed risk score	WRA rating
Kimberley (>400mm AAR)	6.7 x 4.0 x 5.0	134.0	<b>High</b>
Kimberley (<400mm AAR)	6.7 x 4.0 x 0.5	13.3	<b>Negligible-low</b>
Pilbara (>400mm AAR)	6.7 x 4.0 x 1.0	26.8	<b>Negligible-low</b>
Pilbara (<400mm AAR)	6.7 x 4.0 x 0.5	13.3	<b>Negligible-low</b>
Gascoyne – Goldfields	6.7 x 4.0 x 0.5	13.3	<b>Negligible-low</b>

\* Invasiveness (0-10) x Impacts (0-10) x Potential Distribution (0-10) = Weed risk score (0-1000)

Updated May 2022

### Important disclaimer

The Chief Executive Officer of the Department of Primary Industries and Regional Development and the State of Western Australia accept no liability whatsoever by reason of negligence or otherwise arising from the use or release of this information or any part of it.

Copyright © Department of Primary Industries and Regional Development, 2022