

Environmental weed risk assessment

Perennial sorghum (*Sorghum x almum*)

Perennial sorghum is an erect, tussocky, short-lived perennial grass with numerous tillers which under good growing conditions can reach about 3.5m at maturity.

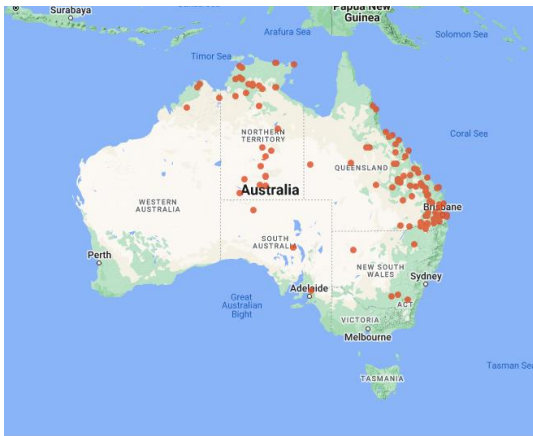
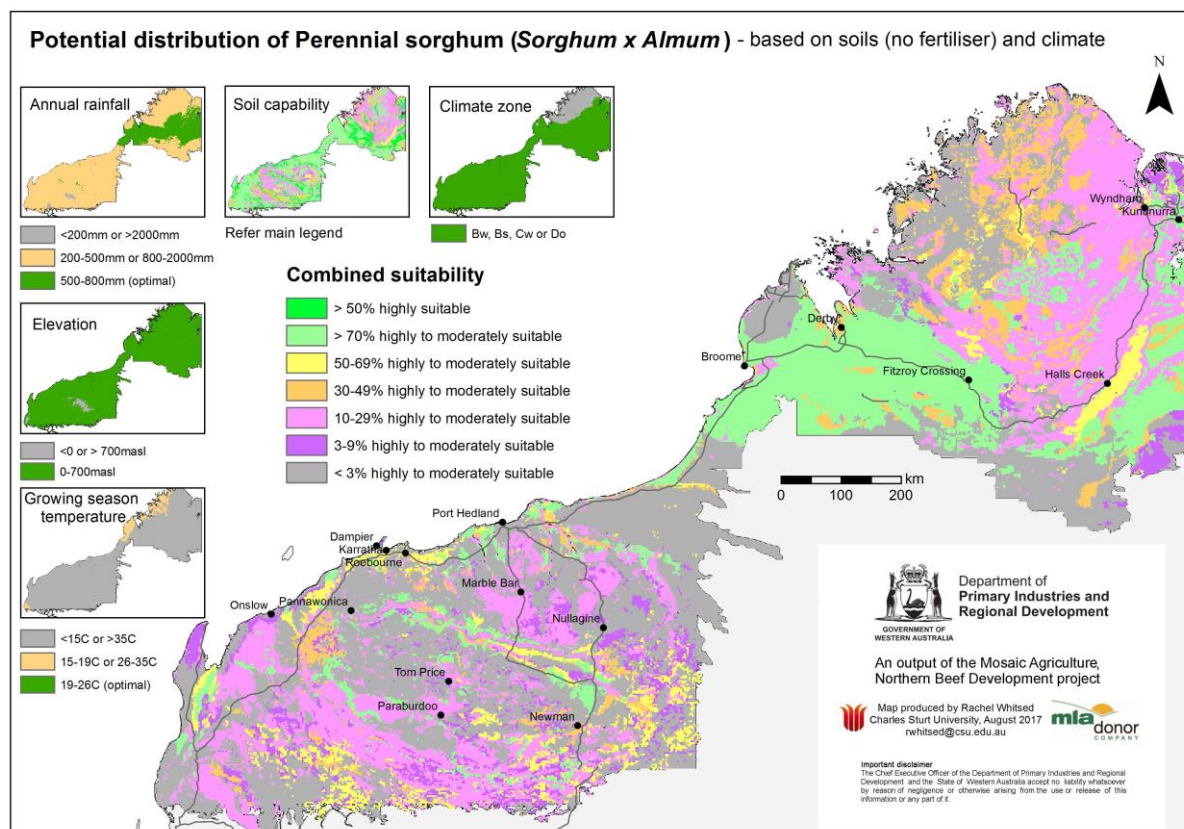


Figure 1 Distribution of Perennial sorghum (*Sorghum x almum*) in Australia
(Source: 'The Australasian Virtual Herbarium')

Invasiveness and Impacts scores by Rod Randall

Invasiveness score	Impacts score
6.3	2.5

Potential distribution



Region	Area of suitable soils and climate (million ha)	Potential distribution score
Kimberley	12.3Mha	8.0
Pilbara	3.59Mha	6.0
Gascoyne – Goldfields	TBD	

Overall weed risk assessment

Region	WRA calculation*	Weed risk score	WRA rating
Kimberley	6.3 x 2.5 x 8.0	126	High
Pilbara	6.3 x 2.5 x 6.0	94.5	Medium
Gascoyne – Goldfields	6.3 x 2.5 x ?	TBC	

* Invasiveness (0-10) x Impacts (0-10) x Potential Distribution (0-10) = Weed risk score (0-1000)

Updated May 2022

Important disclaimer

The Chief Executive Officer of the Department of Primary Industries and Regional Development and the State of Western Australia accept no liability whatsoever by reason of negligence or otherwise arising from the use or release of this information or any part of it.

Copyright © Department of Primary Industries and Regional Development, 2022