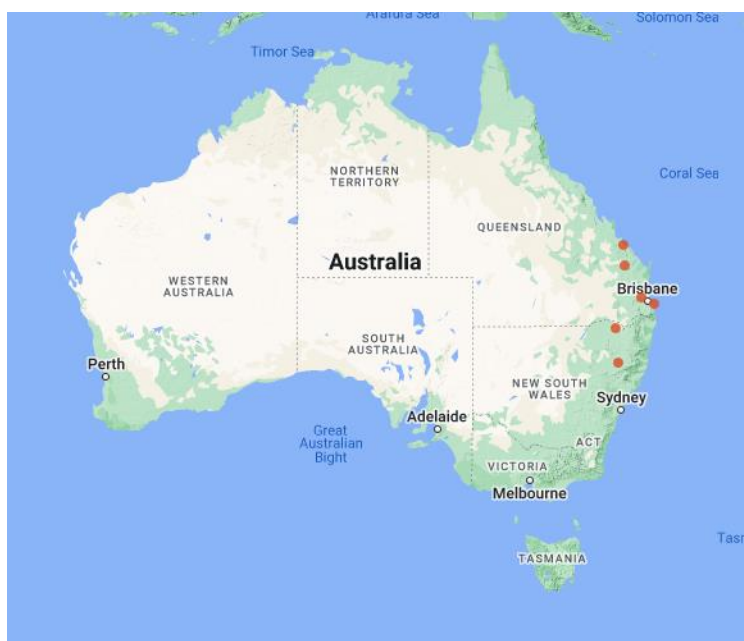


## Environmental weed risk assessment

### Fine stem stylo (*Stylosanthes guianensis* var. *intermedia*)

Fine stem stylo is a tropical, low growing, perennial legume adapted to low fertility soils.

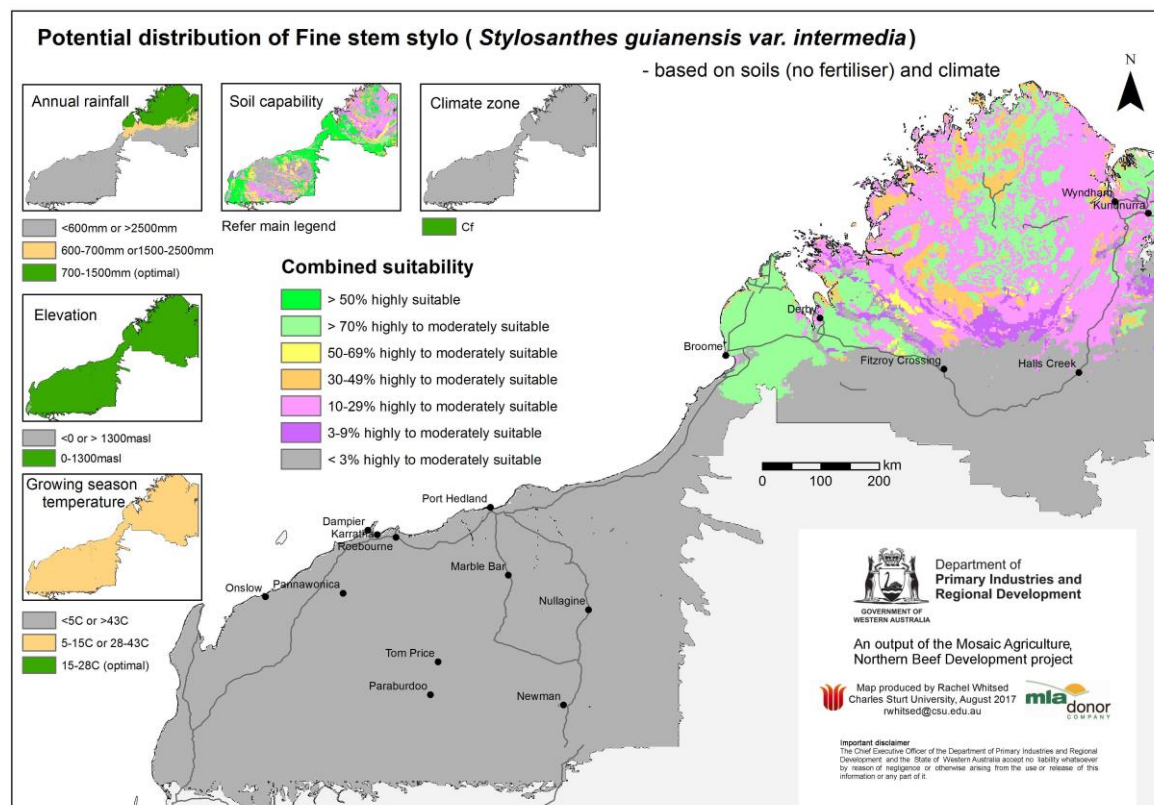


**Figure 1** Distribution of Fine stem stylo, (*Stylosanthes guianensis* var. *intermedia*) in Australia (Source: 'The Australasian Virtual Herbarium')

Invasiveness and Impacts scores by Rod Randall

Invasiveness score	Impacts score
7.0	2.5

## Potential distribution



Region	Area of suitable soils and climate (million ha)	Potential distribution score
Kimberley (>500mm AAR)	8.56Mha	7.0
Kimberley (<500mm AAR)	0	0.5
Pilbara	0	0.5
Gascoyne – Goldfields	0	0.5

\*AAR – Average annual rainfall

## Overall weed risk assessment

Region	WRA calculation*	Weed risk score	WRA rating
Kimberley (>500mm AAR)	7.0 x 2.5 x 7.0	122.5	<b>High</b>
Kimberley (<500mm AAR)	7.0 x 2.5 x 0.5	8.8	<b>Negligible-low</b>
Pilbara	7.0 x 2.5 x 0.5	8.8	<b>Negligible-low</b>
Gascoyne – Goldfields	7.0 x 2.5 x 0.5	8.8	<b>Negligible-low</b>

\* Invasiveness (0-10) x Impacts (0-10) x Potential Distribution (0-10) = Weed risk score (0-1000)

Updated May 2022

### Important disclaimer

The Chief Executive Officer of the Department of Primary Industries and Regional Development and the State of Western Australia accept no liability whatsoever by reason of negligence or otherwise arising from the use or release of this information or any part of it.

Copyright © Department of Primary Industries and Regional Development, 2022