

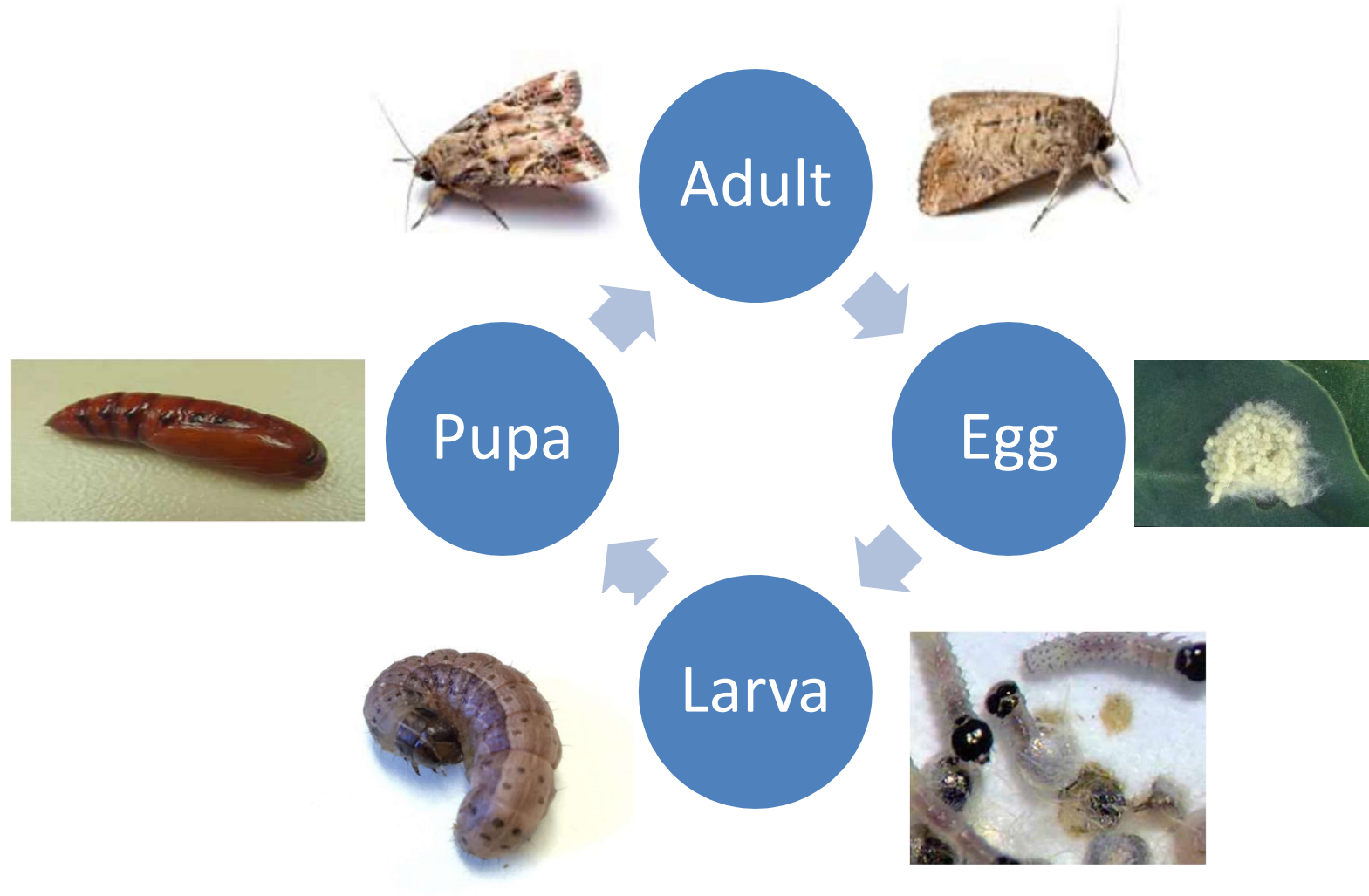


Department of  
Primary Industries and  
Regional Development

# Identification of Fall Armyworm



# Fall armyworm (FAW) lifecycle



Completes a lifecycle in 30 – 90 days

## How to identify FAW eggs

- Eggs are pale yellow and clustered
- Egg masses are usually attached to foliage with a layer of fluff



## How to identify FAW larvae

Fall armyworm larvae (or caterpillars) are similar to caterpillars of other related pests and cause similar damage



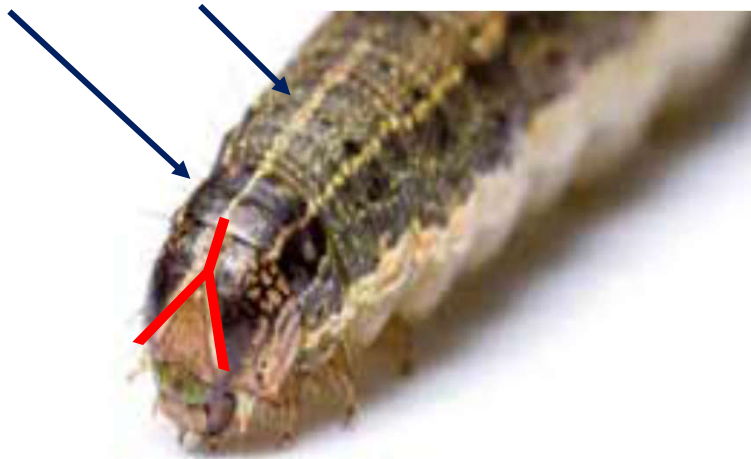
## How to identify FAW larvae

- There are typically six larval instars
- Young larvae are greenish with a black head, the head turning a more orange colour in the second instar - variation in colour
- As they develop, the body develops white lengthwise stripes and dark spots with spines



## How to identify FAW larvae

- Mature larvae have a dark head with a pale, upside-down Y-shaped mark
- Four raised spots shaped like a trapezium on body segments seen from above
- Four spots shaped like a square towards the end of the abdomen



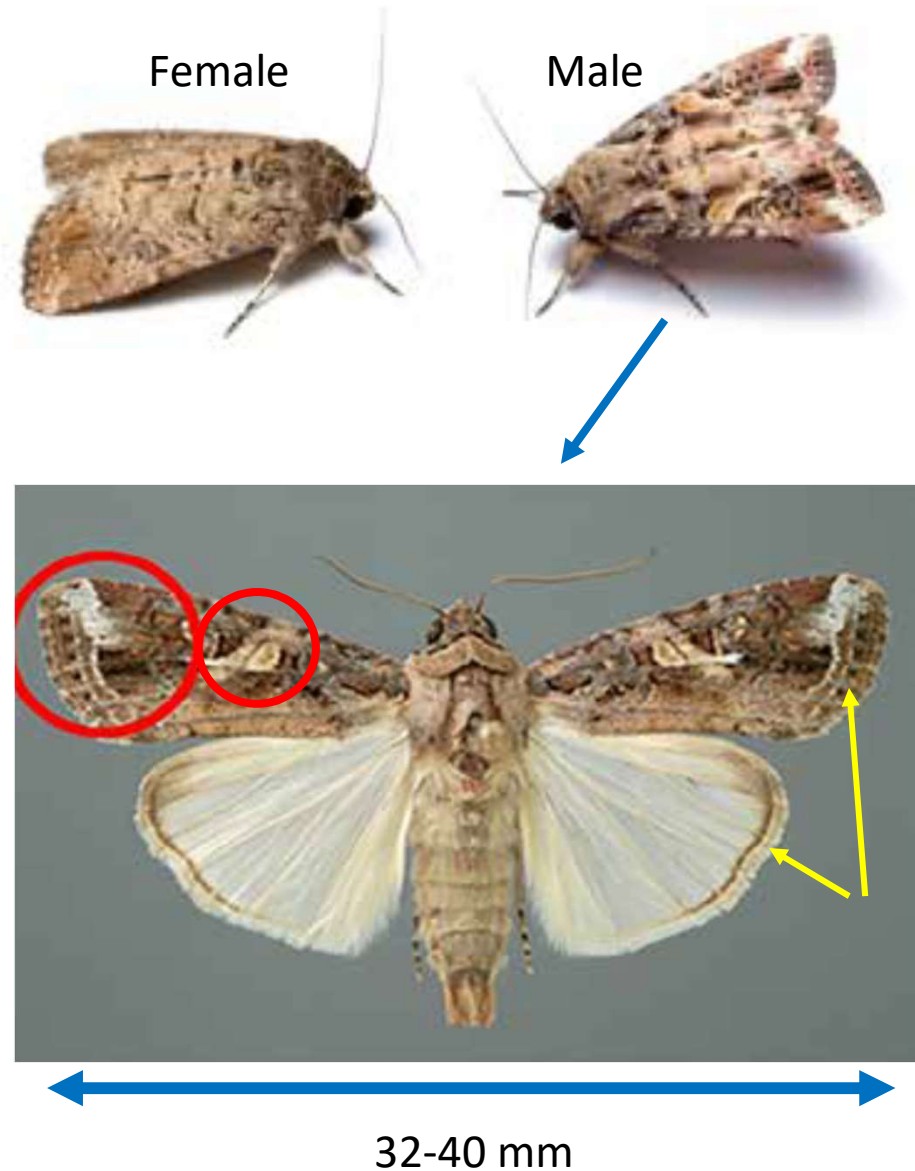
## Identifying FAW pupae

- Pupates in the soil at a depth 2 - 8 cm
- Larva constructs a loose cocoon by tying together particles of soil with silk
- Cocoon is oval in shape and 20 - 30 mm in length
- Very similar to other pupae



## Adults

- Moths are 32-40 mm in width
- A brown or grey forewing and a white hindwing
- Males have more patterns and a distinct white spot on their forewings







# Report your observations



MyPestGuide™ Reporter  
via app or online [mypestguide.agric.wa.gov.au](http://mypestguide.agric.wa.gov.au)



Pest and Disease Information Service  
(08) 9368 3080  
[padis@dpird.wa.gov.au](mailto:padis@dpird.wa.gov.au)

# Thank you

Visit [dpird.wa.gov.au](http://dpird.wa.gov.au)

## **Important disclaimer**

The Chief Executive Officer of the Department of Primary Industries and Regional Development and the State of Western Australia accept no liability whatsoever by reason of negligence or otherwise arising from the use or release of this information or any part of it.

© State of Western Australia 2018