

Spot the spots on diseased plants!

Fungal and bacterial diseases can damage all parts of our precious plants and trees. While healthy plants and trees can cope with many of these diseases, some exotic plant diseases can kill them.

Plant diseases are usually spread by water, wind or in infected plant parts. Fungal spores or bacteria can also contaminate your body, clothing or equipment and spread to other plants.

How many plants and trees affected by plant diseases can you detect?

Activity goal

The goal of this activity is to spot, photograph and report plants and trees with signs and symptoms of fungal and bacterial diseases. Remember, look and report but don't touch infected plants.

What to look for

Fungal and bacterial diseases cause unsightly spots (lesions) on leaves, stems or trunks, branches, and fruits of plants and trees. The colour and texture of the lesions varies according to the disease.

Colourful patterns



Rusts, spots and smuts

Raised rust pustules on leaves, stems and flowers like in [myrtle rust](#) that affect Myrtaceae plants such as bottlebrush, paperbark, peppermint and eucalypt trees, Geraldton wax and lilly pilly.

Black streaks like in [onion smut](#).
Dark spots, or streaks on leaves or stems like [blackleg in potatoes](#)

Moulds & Mildews



White, grey or black

White, powdery growth on leaves like in [powdery mildew](#) in vegetables or fluffy growth under leaves like in [downy mildew in grapes](#) and vegetables.

Light to dark brown mold lesions, or brown, sunken lesions on ripe fruit like [late blight](#) on potatoes and tomato fruit.

Lesions



Cankers, cracks and rot

Cankers on fruit and stems like [citrus canker](#) that affects citrus varieties like grapefruit, lime mandarin, orange, cumquat, lemon, and some native species like the Australian finger lime.

Also sunken areas, cankers and cracks on branches and trunks like [fire blight](#) in pome fruit.

Why it is important to find and report these diseases

Your reports of plant and tree diseases can help protect your food, WA's fruit and nursery industries and our natural environment. Look and report but don't touch! Regularly check your plants for signs and symptoms of bacterial and fungal diseases. Your reports may increase the likelihood of early detection and eradication of exotic plant diseases.

Are you ready to report these diseases?

Materials required

- A mobile (phone or tablet) with [MyPestGuide® Reporter](#) installed.
- Instructions for making a [report](#).

Use your phone's macro setting to take clear closeup images of the symptoms or add a macro lens.

What to do

1. Take a walk in your garden, neighbourhood, orchard, park, or natural area. Choose a plant and take a close look at it.
2. Check for signs that indicate bacterial or fungal diseases.
3. Start a new report in MyPestGuide® Reporter app:
 - a) Take three close-up photos of your findings, including both the top and bottom of leaves that have symptoms.
 - b) Take a final picture showing as much of the plant or tree as possible for identification.
 - c) Complete the details and submit your report.
4. Choose another plant in the same area and repeat steps 2-3.

Spot signs and symptoms of plant diseases



Leaves may become buckled and twisted



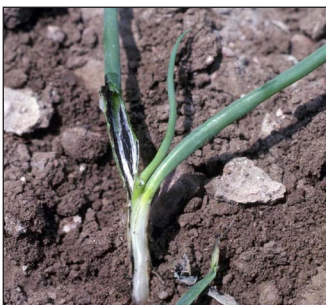
Mottling and yellowing of leaves



Water soaked, round, sunken spots on fruit



Leaves with sunburnt appearance



Dark blackish streaks on leaves



Black patches on fruit and leaves



Distinct spots on leaves



Dark spots, fungal growth and fruit rot

Important disclaimer

The Chief Executive Officer of the Department of Primary Industries and Regional Development and the State of Western Australia accept no liability whatsoever by reason of negligence or otherwise arising from the use or release of this information or any part of it.

Copyright © State of Western Australia (Department of Primary Industries and Regional Development), 2023.